



251 NORTH WOLF ROAD
WHEELING, ILLINOIS 60090

AL FANTL..DIRECTOR
SANDY ALTIERI..PROMOTION COORDINATOR

A WORD FROM AL FANTL

..... When we look back into local history**, we have an advantage our ancestors did not have, that is to see the outcome of their decisions of that day, and it's effect on us today. We learn from their judgements to be more aware of what we give to our future generations; so they in turn, can look back and say thanks for considering me in your deliberations. History helps us discern right from wrong and good from bad etc.

Elsewhere within this newsletter are messages and appeals written by our volunteers in many many fields. We need your help; it's an enjoyable learning experience. Call us no matter what your background, if you're high school, or a proud senior or in between. We've got a book to publish, a Who's Who to research, and a Museum to develop with programs of every kind to interest all.

Join today, your past will thank you, our future will thank you, your community will thank you.

E. Albert Fantl
Project Coordinator

**From the Des Plaines to the Fox River.
From Lake County to O'Hare. We have
common ground.

ARTS UNLIMITED

The museum participated in the Arts Unlimited program at Wheeling High School on May 1st and 2nd. Students and visitors alike enjoyed seeing the many artifacts on display. Many thanks to Al Feinberg, Bernie Nathan, Greg Glasson, Betty Barrie, Gertrude Century, and Shirley Mueller for helping our director, Al Fantl, to inform the public of the museum's projects.

VILLAGE PRESIDENT'S MESSAGE

The Village of Wheeling, population approximately 24,000, a northwest suburb. ... To me, Wheeling is a well run community, financially sound, with good streets, ample water, and efficient services. But more important, it is a community of people whose spirit gives life to our village.

We are continually working together to become a better place to live. Wheeling's current progress toward the ideal involves many interesting projects, none more exciting than the compilation of its colorful history. To realize our full potential, it's important that we know who we are, where we came from, and where we are going.

The research done by the volunteer editorial staff is bringing to light a wealth of information that will help us all understand and appreciate the unique qualities of our village. Pride in our past is a fine foundation on which to build our future.

Sheila H. Schultz
Village President

THE GREAT NORTHWEST SUBURBS

The Journal newspaper published a supplement, "The Great Northwest Suburbs", on April 25th; in which the museum submitted an article about Wheeling's history. A special thank you to Barbara McIntyre for writing the SUPER story on "Restaurant Row". For those of you who did not have an opportunity to read it, there is a copy of the article at the museum.

INDIAN TRAILS LIBRARY

During the month of April, the museum displayed artifacts pertaining to the library's growth from its inception in 1959 to the present at the new library on Schoenbeck Road. Congratulations, Indian Trails, on your 25th anniversary.

THINGS I NEVER KNEW.....(until I started researching local history).

Originally, Illinois was all prairie except for timbered land known as "groves!" They were the only landmarks and the earliest pioneers settled in groves of trees near waterways. Thus we have communities named Buffalo Grove, Elk Grove, Plum Grove, Deer Grove, Long Grove, Fox River Grove, Downers Grove, Morton Grove, etc. The first of the pioneers was Mr. Sweet who staked a claim to land in a grove on the Des Plaines river where the Palwaukee Motor Inn is now. Had he put down roots and become a settler, we now might have Sweet Grove 60090 as a Post Office address instead of Wheeling.

The first task on arrival was the erection of a home. Logs had to be cut to uniform size, neighbors came for the cabin raising and the owner completed the building by chopping openings for the door, window and fireplace. The latch on the door was controlled by a string which was kept inside at night for safety. However, it passed through a hole from the inside and hung outside ready for welcome visitors - the origin of the friendly phrase, "The latchstring is always out".

AMONG THE MANY THINGS I DON'T KNOW (but wish I did) is the original name of Dundee Road. If you know the answer, please call the Wheeling Historical Museum and earn our gratitude, (537-3119).

Barb McIntyre
Writer

A WORD FROM THE EDITOR

I've written two books and edited several more, but working on the Wheeling history is a unique experience for me. Material is coming in from many sources-interviews with old timers and their descendants, photographs, and written material in the form of news items, letters and copies of documents. A major problem at this point is finding an appropriate way to present it. We started out filing things chronologically, while reserving the right to let the material itself dictate the way it should be organized. Segments are being written by participants in the volunteer program and now a format has begun to take shape. Since important events took place along Milwaukee Avenue, and the Des Plaines River which parallels it, it will be the locale of a major portion of the book.

Robert L. McIntyre
Editor

MUSEUM LIBRARY

The library department of the Wheeling Museum is in the process of labeling and recording the printed material and pictures that have been loaned or given to the museum. Many of these will be on display showing the progress of Wheeling.

Any printed matter or pictures from the past would be appreciated.

Volunteers are needed to help the Librarian to date and file photographs and documents. This would require only a few hours a week.

Contact the Wheeling Museum at 537-3119.

Betty Barrie
Librarian

W H O ' S W H O

The "Who's Who" book will be compiled of people who have contributed something to the town of Wheeling. Without the help of these people, Wheeling would not be what it is today, an industrious, productive, growing community.

People are now being contacted and asked to give a one page resume' of their background. This would consist of their family heritage, and outstanding achievement throughout their lives. With their help and the help of our volunteers, the "Who's Who" book will have well over 300 names or more. A very informative book for people who want to know about Wheeling 20 years from now.

Barbara La Hay
Chairperson

VOLUNTEERS

The goal of a museum is to make the past come alive for the present generation and provide a background for the future.

To a historian, any resident of a specific area is a contemporary source of historical facts for that area for at least as long as he/she has lived there. The Wheeling Historical Museum needs help in exploring the history of the area through its contemporary sources.

Individuals, institutions, businesses can be of great help in this endeavor by volunteering information or by offering their service in the work of exploration.

For more information or to volunteer, call Geraldine Swan, Coordinator of Volunteers, at 537-3130 evenings or weekends.

Your help will be greatly appreciated.

PHOTO PRESERVATION WORK

This project will entail the copying of the Wheeling Museum's collection of old and historic photographs and selected documents onto modern photographic materials. The purpose for this is two-fold. First, in the interest of preservation it is desirable to create copies on modern materials due to their superior aging properties. This will insure that these historic local images will be around in the years to come. Much of the museum's collection is already showing the effects of age and wear. Secondly, the availability of modern negatives created from the old original photos will enable the duplication of the images to any desired size for inclusion in publications such as the museum's upcoming book on local history or for sale or distribution individually.

The copying itself will be carried out with an eye toward limited restoration where possible. This includes rephotographing the originals using film types and filters best suited to each individual image and its state of deterioration. The resulting negative will then be proof printed and filed with an index allowing the development of a cross-reference to facilitate the rapid location of an image best showing a particular type of scene and time.

Charles A. Swan
Photographic Consultant/
Curator

IN APPRECIATION

To the Wheeling Chamber of Commerce for their support and encouragement in our endeavor to write our local history. Many thanks to Jackie Polack for the publicity she has given us in their newsletter.

To Duane Frykman of Larry Frykman Office Machines Inc., 281 E. Messner Dr., Wheeling, for refurbishing five of the museum's typewriters. He is also researching the typewriters for us. Thank you, Duane, for your help and support!

INTERVIEWING

Deadlines for the Wheeling Historical Museum book are approaching. We still have over one hundred people on the list to be interviewed. We need your help!!!!

We don't want to miss anything. If you have ever interviewed or think you would like to learn how, please contact us.

June Stewart
Individual Interviews

OFFICE STAFF

The volunteers working in the office will be doing the typing, filing, and making copies of all the newspaper articles and pictures which will be in the book.

Hopefully we will have approximately one hundred volunteers working in the office at different times. The response is very good and everyone is enthusiastic about the project.

Lonnie Schnaitmann
Office Manager

FUTURE OF WHEELING

After several false starts in writing the "Future of Wheeling" Julie Woods, Assistant Village Planner, has gone to the source of Wheeling's future, the Village Government for assistance in writing her chapter for Wheeling's history book. Julie is interviewing village department heads and personnel, asking their opinion of what they think Wheeling will be like in 10, 25, and 50 years from now. This information will then be summarized in a "scenario" of Wheeling's future for inclusion in the history book.

This is the first issue of our quarterly newsletter. The next issue will be coming out in September. This is your newsletter... I encourage you to submit an article. Our main objective is to keep the community informed of the many projects going on at the museum. If you have questions, call Sandy Altieri at 537-5110

SEPTEMBER NEWSLETTER DEADLINE IS AUG. 15.

Please send articles to:

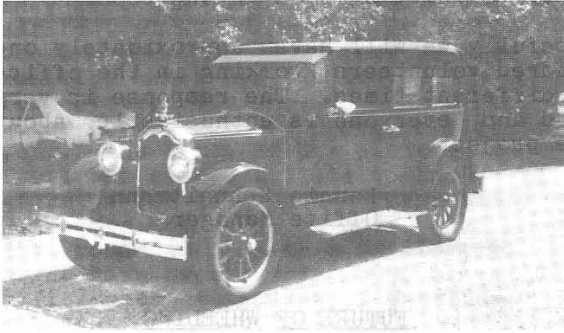
Sandy Altieri
36 Laurel Trail
Wheeling, IL 60090

MUSEUM HOURS

Volunteers working on the book may come in on any of the days listed below to do research, transcribing, typing, etc. The hours will be extended as the need arises

Sunday	1pm - 5pm.
Tuesday	10am - 1pm.
Wednesday	10am - 1pm.
Thursday	10am - 1pm.

Good luck on your first publication!



"The bottom line is what counts"

GLASSON & ASSOCIATES
Bookkeeping/Consulting
(312) 459-1121



MFC MORTGAGE CORPORATION
AN EQUAL HOUSING LENDER
A SUBSIDIARY OF FIRST NATIONAL BANK OF WHEELING

Nicholas R. Fanella
President

125 McHenry Road
Wheeling, IL 60090

(312) 459-8123

ag

ad-gift specialties

Specialty & Gift Items for
Business-Clubs-Sales Promotions
JOAN KARGE • ERNIE KARGE

526 St. Mary's Pkwy.
Buffalo Grove, IL 60090

(312) 541-5041

Wise Travelers look to ...

PHONE (312) 541-6660



TRAVEL WISE, LTD.

"specialists in domestic and international travel arrangements"

Denise Kennedy
Manager

526 W. DUNDEE ROAD
WHEELING, ILLINOIS 60090 U.S.A.
(In the Lynn Plaza Shopping Center)

LYNN PLAZA SHOPPING CENTER

538 DUNDEE RD.
WHEELING, IL 60090

J. EDWARDS MEN'S SHOP

541-0729

WHEELING HISTORICAL MUSEUM
251 NORTH WOLF ROAD
WHEELING, ILLINOIS 60090



Adeline & Lucille Schneider
133 N. Milwaukee Ave
Wheeling, IL. 60090